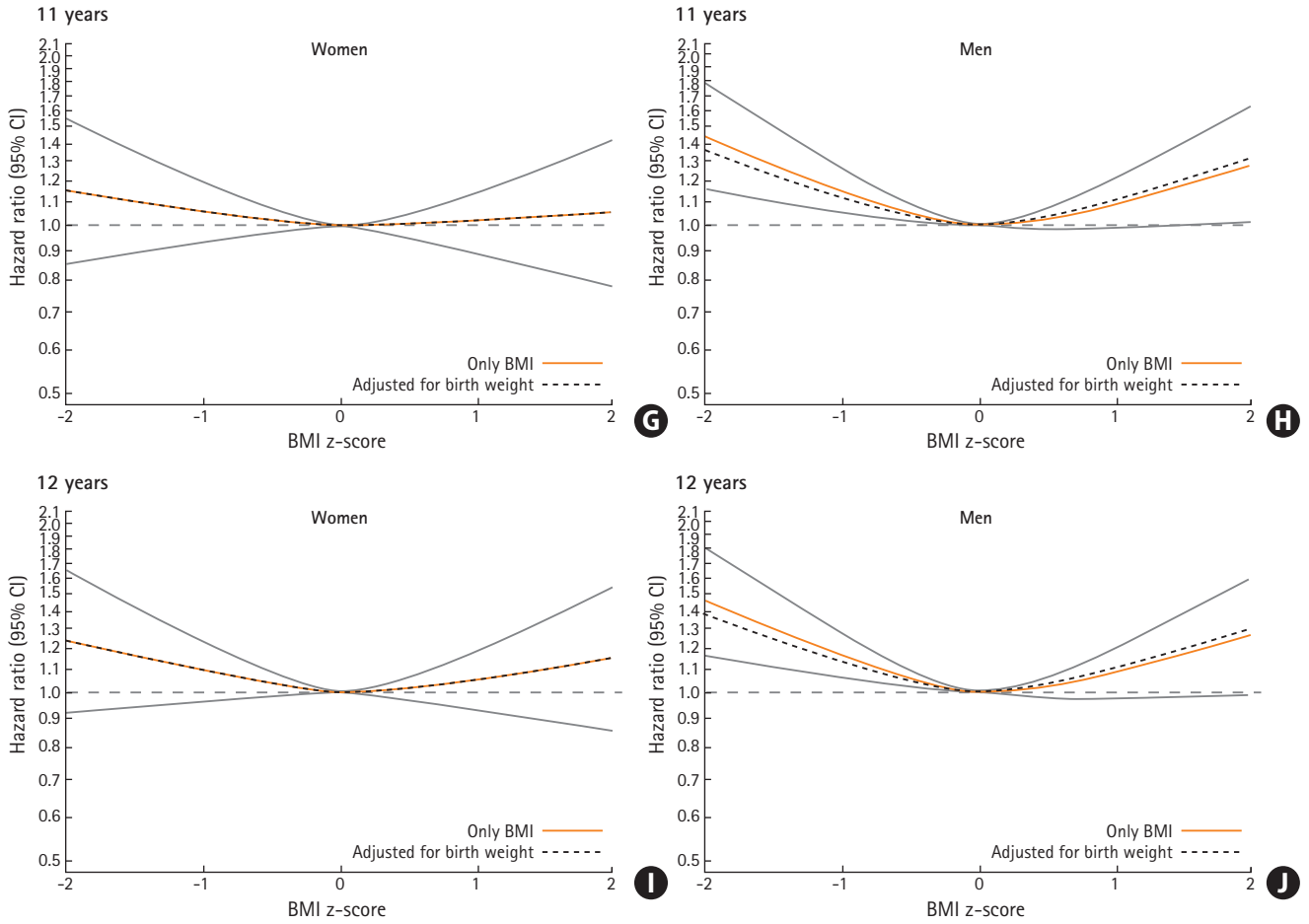


Supplementary Figure 1. Continued.



Supplementary Figure 1. Associations of childhood body mass index at age 8, 9, 10, 11, and 12 years with risks of intracerebral hemorrhage among women and men. Hazard ratios and 95% confidence intervals (CIs) are given for a 1-unit increase in body mass index (BMI) z-score. All analyses are stratified by birth cohort. (A) Women, 8 years. (B) Men, 8 years. (C) Women, 9 years. (D) Men, 9 years. (E) Women, 10 years. (F) Men, 10 years. (G) Women, 11 years. (H) Men, 11 years. (I) Women, 12 years. (J) Men, 12 years.